

Installation Overview:

The Sunny WebBox is most commonly installed on a Local Area Network (LAN). The IP addressing schema of the LAN needs to be understood so we may setup the addressing on the WebBox to be compatible with that LAN. Once we have the WebBox operating on the LAN the inverter detection process is completed and finally registration with the Sunny Portal can occur if the customer wishes.

LAN IP addressing schema interrogation

With a MAC OS based computer that is already attached to the LAN with Internet access fully functional do the following:

1. From the **Apple** menu, choose **System Preferences**.
2. In the System Preferences window, click Network to display its preferences.
3. From the **Show** pop-up menu, choose **Built-in Ethernet**.
4. Click the TCP/IP tab, and choose **Using DHCP** from the **Configure IPv4** pop-up menu.

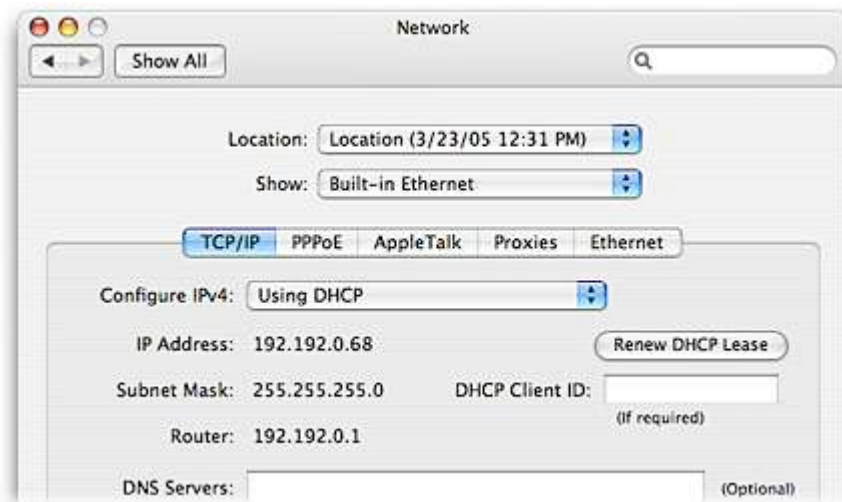


Fig. 1

- Record the IP address currently assigned to this computer
- Record the IP address of the Default Gateway
- Record the IP address of the DNS server(s)

How to interpret the addressing schema

- If the prefix of the IP address of your computer is anything different than 192.168.0.xxx like we have seen in the above screen shot the IP address of the computer will be required to place your computer in this IP address range. If your computer is in the 192.168.0.xxx address range go directly to the Connecting to the WebBox section in this guide.
- To change the IP address please do the following:
 - From the **Apple** menu, choose **System Preferences**.
 - In the System Preferences window, click Network to display its preferences.
 - From the **Show** pop-up menu, choose **Built-in Ethernet**.
 - Click the TCP/IP tab, and choose **Manual** from the **Configure IPv4** pop-up menu.
- Use the following IP address: 192.168.0.100
- Save these settings by clicking "**Apply Now**"
- Connect the blue crossover cable to the Ethernet ports of the WebBox and the computer.

Connecting to the WebBox

- There are two cat 5 data communication cables (one is blue the other is red) that come with the WebBox. Use the blue crossover cable first to connect directly from the Ethernet port on your computer to the Ethernet port on the WebBox.
- From the **Network Utility** window use the ping tab ping 192.168.0.168.
- Once you can successfully ping the WebBox start up your Web Browser and in the browser window enter <http://192.168.0.168> and you will see the WebBox front page where you can login to the WebBox using the default password sma.

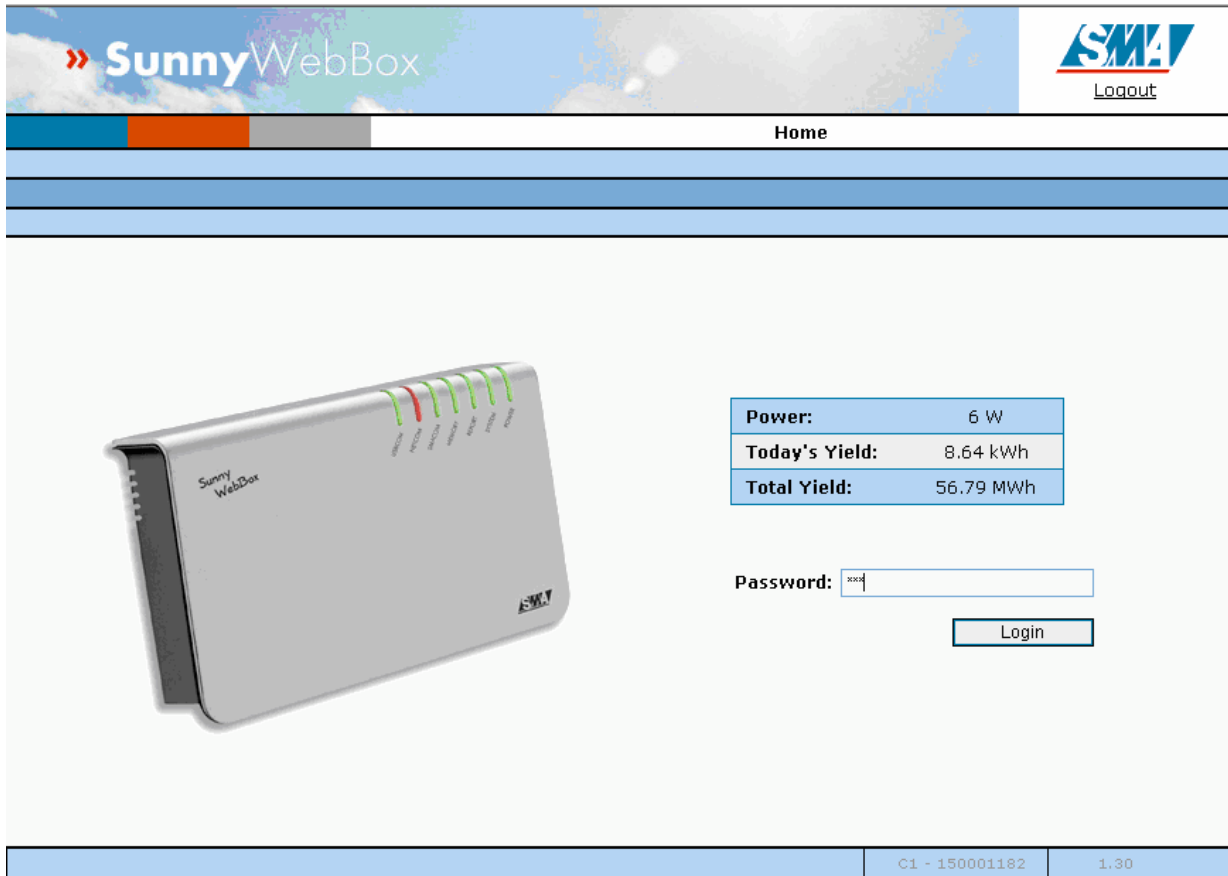


Fig. 6

- When you are logged on go to the WebBox - Settings screen and set the proper time, date and time zone. See WebBox manual page 51 for further information
- Go to the WebBox - Portal screen and enter your Plant Name and the WebBox administrators email address. See WebBox manual page 64-65.
- Then go to the Plant Detection screen (Fig. 7) and enter the number of inverters you have installed with RS 485 PB cards and have wired them to the WebBox and press start detection. See WebBox manual pages 45-47.
- Upon successful detection you will see the following screen. Click "OK" to continue and you will be returned to the "Plant" screen.

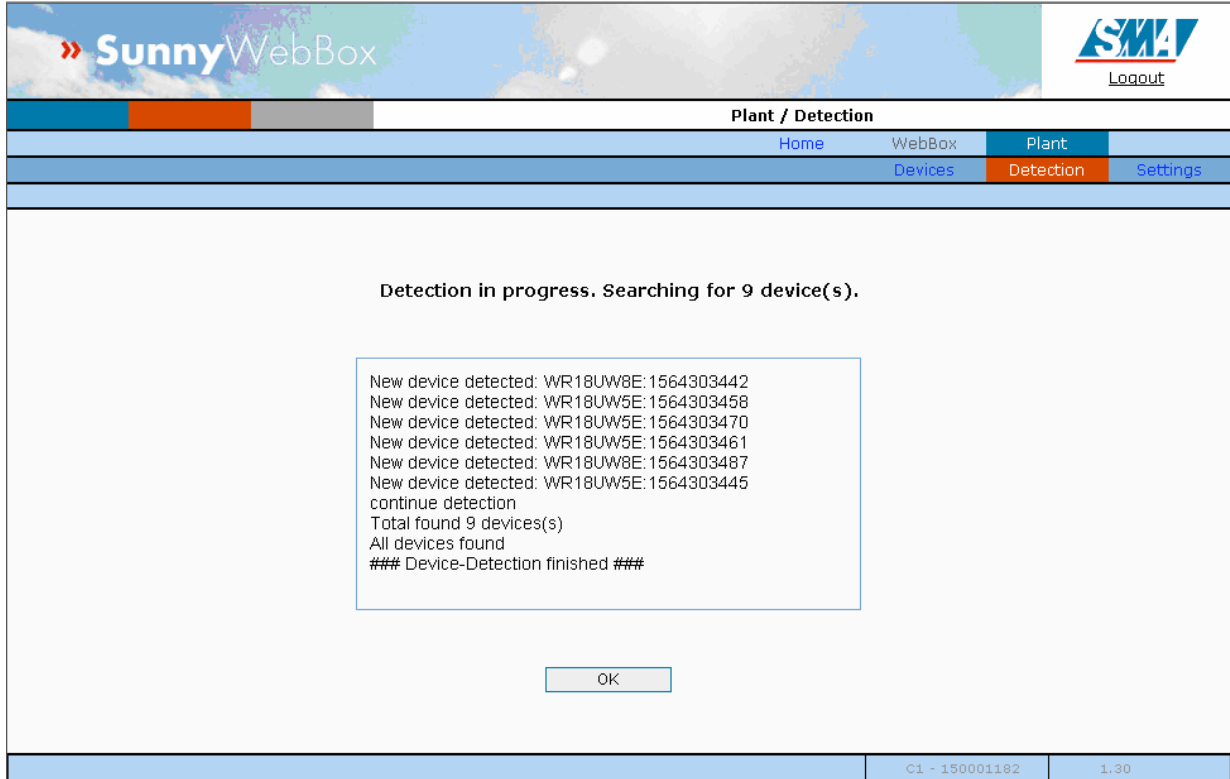


Fig. 7

- Now go to the WebBox – Devices screen (Fig. 8) and you can see the new devices in the left column of the page

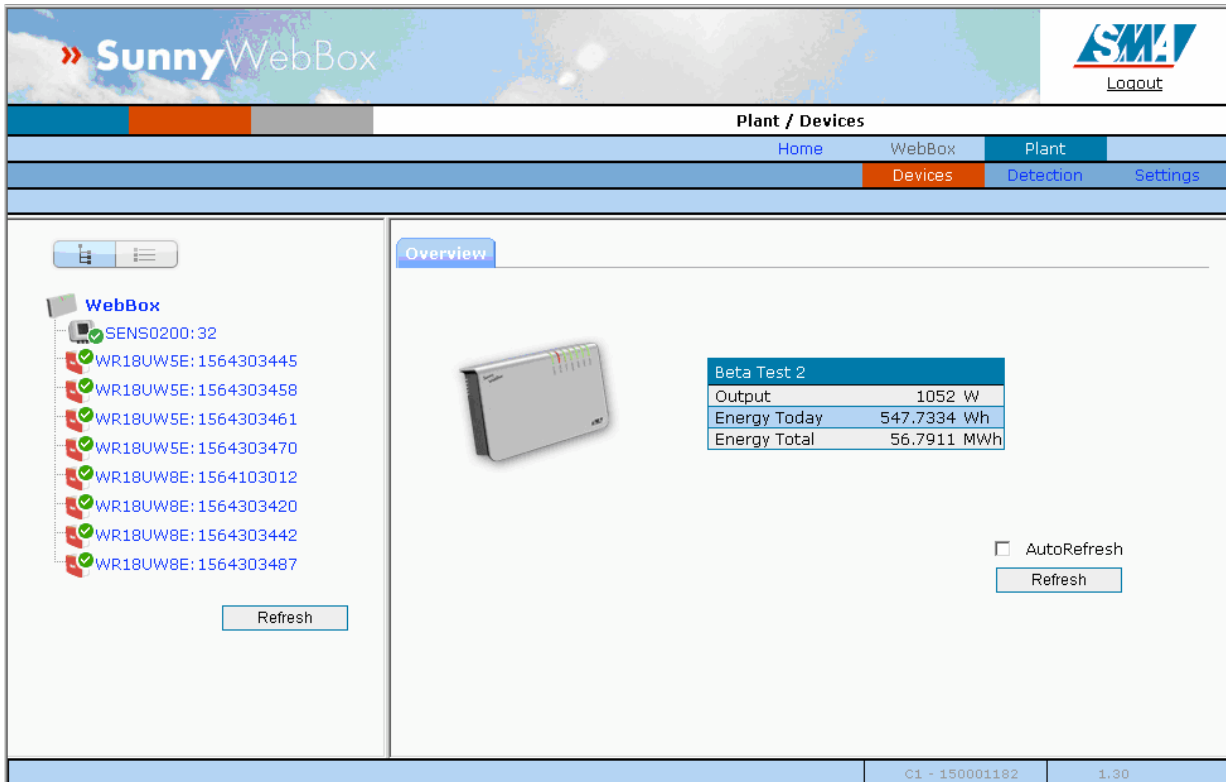
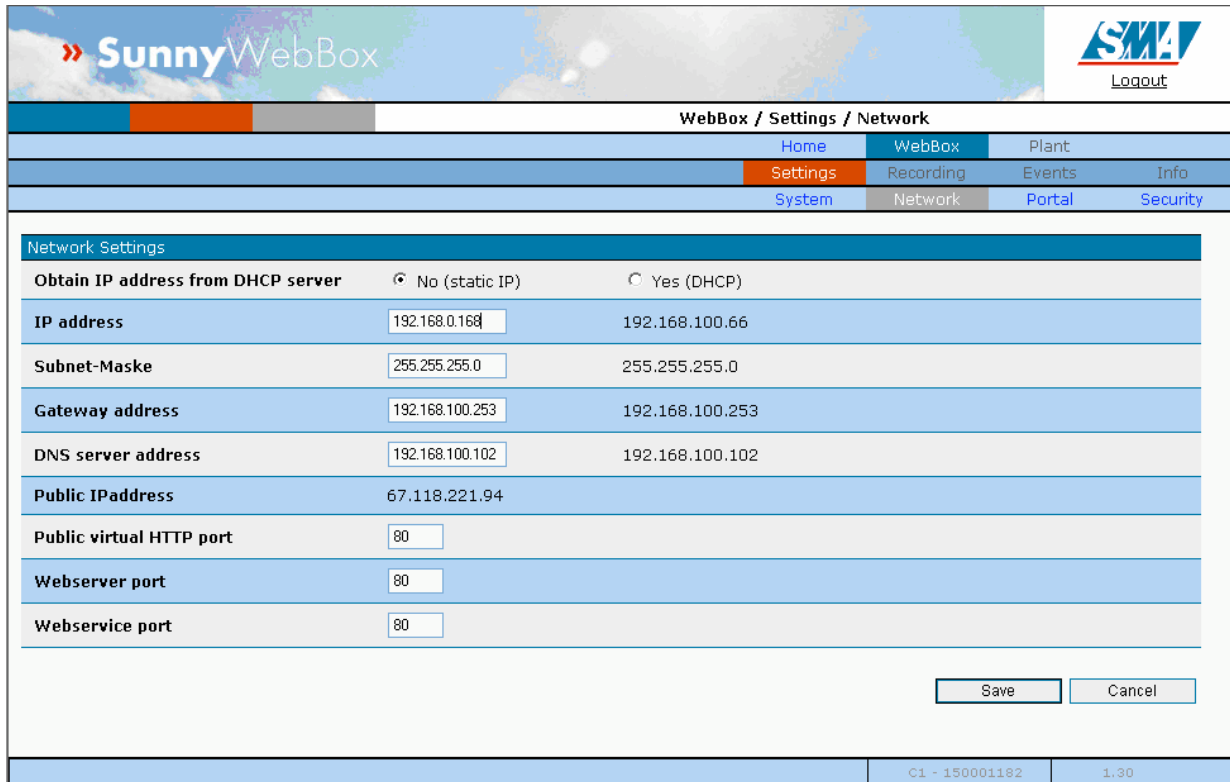


Fig. 8

- Now go to the WebBox – Network screen (Fig 9). Enter the Default Gateway and DNS server addresses that recorded at the beginning of this Quick Start Guide into the Gateway address and DNS server address fields under the “static IP” column.
- If the original IP address of the computer was anything other than 192.168.0.xxx the IP address of the WebBox will need to be changed to conform to this schema. Ask the network Administrator for an IP address not currently in use on the LAN and enter this address in the IP address field. Then press save and say yes when asked to confirm. You will then see a message saying that the WebBox will be available in a moment at the following IP address.
- At that moment you will lose connection to the WebBox. Remove the Blue Crossover cable and plug in the RED data cable into the WebBox and the Router or Hub on the LAN. And use a similar standard Ethernet data cable and connect the computer to the Router or Hub on the LAN.



The screenshot shows the Sunny WebBox interface. At the top left is the Sunny WebBox logo. At the top right is the SMA logo and a Logout button. Below the header is a navigation menu with the following items: Home, WebBox, Plant, Settings, Recording, Events, Info, System, Network, Portal, and Security. The 'Network' menu item is highlighted. The main content area is titled 'Network Settings' and contains the following fields:

Obtain IP address from DHCP server	<input checked="" type="radio"/> No (static IP)	<input type="radio"/> Yes (DHCP)
IP address	<input type="text" value="192.168.0.168"/>	192.168.100.66
Subnet-Maske	<input type="text" value="255.255.255.0"/>	255.255.255.0
Gateway address	<input type="text" value="192.168.100.253"/>	192.168.100.253
DNS server address	<input type="text" value="192.168.100.102"/>	192.168.100.102
Public IPAddress	67.118.221.94	
Public virtual HTTP port	<input type="text" value="80"/>	
Webserver port	<input type="text" value="80"/>	
Webservice port	<input type="text" value="80"/>	

At the bottom right of the form are 'Save' and 'Cancel' buttons. At the bottom of the page, the status bar shows 'C1 - 150001182' and '1.30'.

Fig. 9

- Now put the new address of the WebBox into the web browser on the computer and log into the WebBox
- Go to the WebBox - Info screen (Fig. 10) and enter the Plant name
- Enter the email address of the person you want to receive the Sunny Portal password when the WebBox is registered with the Portal
- Press the Register button and in a few moments the Sunny Portal Registration at field will have today's date and time and OK
- The WebBox is now installed and fully functional.
- When the Sunny Portal email password arrives the user can log onto the Portal and download the manual which will be used to customize the Portal page.

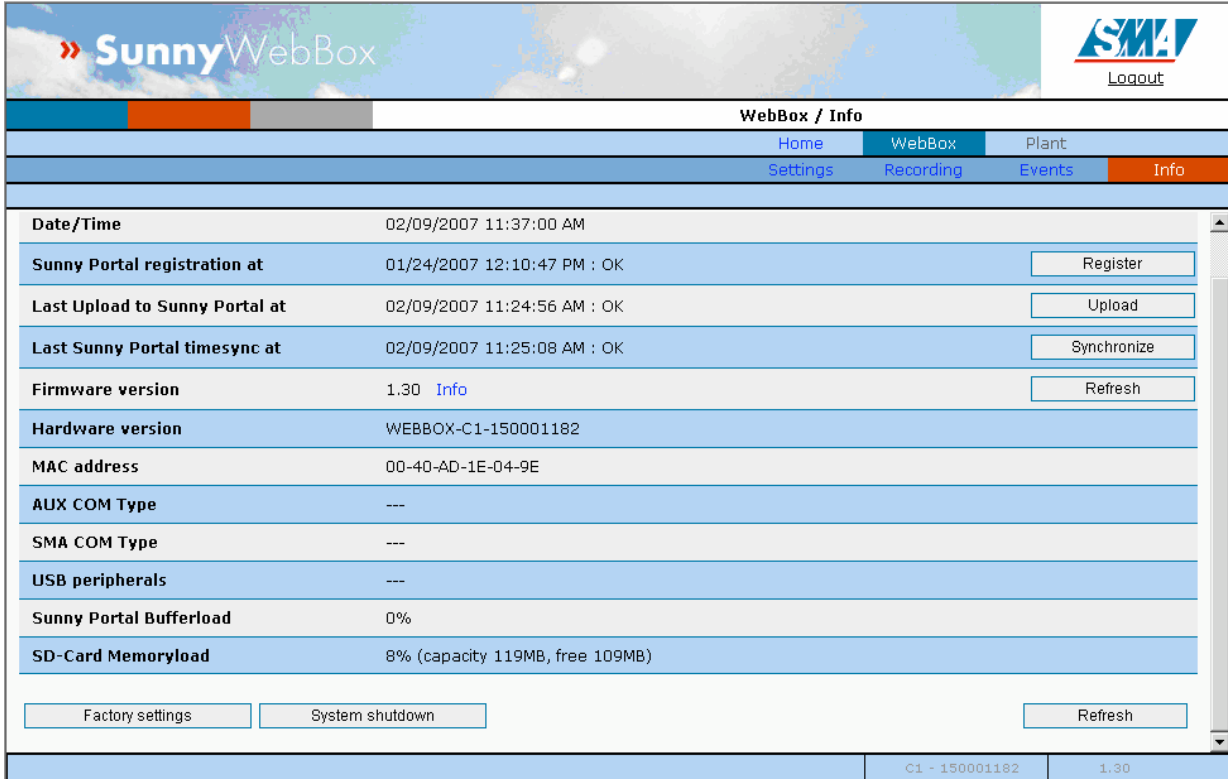


Fig. 10

- This completes the Sunny WebBox Quick Start Guide. For further detailed information please see the Sunny WebBox installation manual.
- The process of configuration customized pages on the Sunny Portal can now be started. Go to www.sunnyportal.com and download the manual which contains step by step instructions to set up the Sunny Portal.
- Use the email address previously configured on the Portal screen and use the password which was sent to that address from service@sunnyportal.com to log on to your begin customization of your new Sunny Portal web page.